

GPS Vehicle Tracking Solutions



u-TRAO™ auto
by Uplink

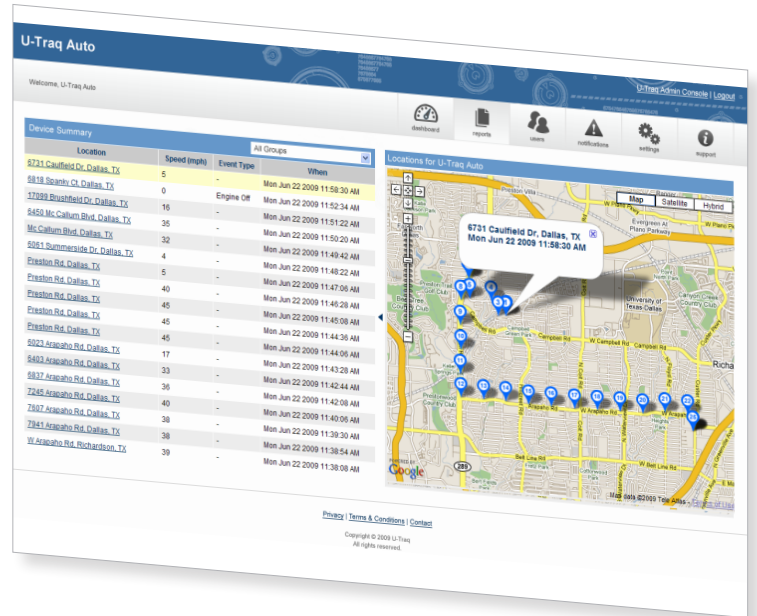
- Simple – installs in seconds
- Perfect for keeping family members safe and protected while on the road
- Reliable and cost effective way to track teen and elderly drivers
- Plugs into the vehicle's OBD* port under the steering column
- Optional cable available for remote mounting



u-TRAO™ autoPRO
by Uplink

- Permanent installation for additional security
- Perfect for small businesses looking to keep track of their company vehicles
- Powered by vehicle – no external power required
- Maintains vehicle location history for up to 60 days and allows you to manage groups

u-TRAO™
by Uplink



Key features of the mapping software include click-to-locate, over-speed alerts, live tracking, trip reporting, Geo-fence set-up and boundary violation alerts, and more.

"GPS Tracking gives me the peace of mind and security of knowing where my kids are and where they've been. u-TRAO helps me ensure they're practicing safe driving habits."

"u-TRAO is truly "plug and play." Simple to install hardware. Easy to set-up tracking account. Couldn't be simpler."

FAQs

What is my subdomain name?

Your subdomain name should consist of your company name (or as close to it) attached as a prefix to the www.u-TRAQ.com website address. You create a subdomain name when you first register with the u-TRAQ dealer portal online. This address is where you and your customers will go to access the GPS Tracking website.

How do I access my account?

You can access your account by logging into the u-TRAQ dealer portal at: [www."yoursubdomain".utraq.com](http://www.). This unique subdomain location allows you to activate additional units, create new customers, review bills, and manage accounts online. If you have already registered and have forgotten your subdomain, contact customer service at sales@uplink.com.

How do I change a customer's information?

Customer information can be changed by accessing the "Customer" tab once inside the Dealer GPS Tracking website. Simply select the customer by name and click on the "Edit Customer" tab. You will then be able to change the customer information.

How do I change a device's information?

Once logged into the Dealer GPS Tracking website, go to the "GPS Devices" tab. Once you locate and select the specific device you wish to change, click on the "Edit Device" tab and you will be able to alter information.

If I already have an Uplink account, do I have to set up another account for u-TRAQ?

Yes, the GPS Tracking Website is a unique web management portal that we have created for the u-TRAQ product line. As such, you will need to create a separate account.

"Finally. A true **cost effective** way to manage my small service fleet. With U-TRAQ, I can track where my technicians are and where they've been. And with the Locate Now feature, I'm **always in touch** with my service fleet."

	Basic Plan	Advanced Plan
Typically Used For	Residential Customers or Small Business requiring infrequent spot locating	Businesses requiring small fleet management or residential customers that require comprehensive tracking
Features		
	Locate Now Click to locate from an internet enabled device (computer or cell phone)	Location reporting every 5 minutes while engine is on
	Track Now Request reporting for one hour period with location tracking every five minutes	Locate Now Click to locate from an internet enabled device (computer or cell phone)
	Engine On and Off reporting	Engine On and Off reporting
	Daily Heartbeat	Daily Heartbeat
	Email notifications for up to three user-defined Alert Zones	Email notification for up to three user-defined Alert Zones
	Email notification for One user-defined Speed Alert	Email notification for One user-defined Speed Alert
	60 days history	60 days history



*The location of the OBD port in cars manufactured since 1996 can be found at www.obdclearinghouse.com.

© 2009 Uplink Security LLC. All rights reserved. u-TRAQ by Uplink is a trademark of Uplink Security LLC. For more information, please visit www.uplink.com.